

User Manual ZP10L9



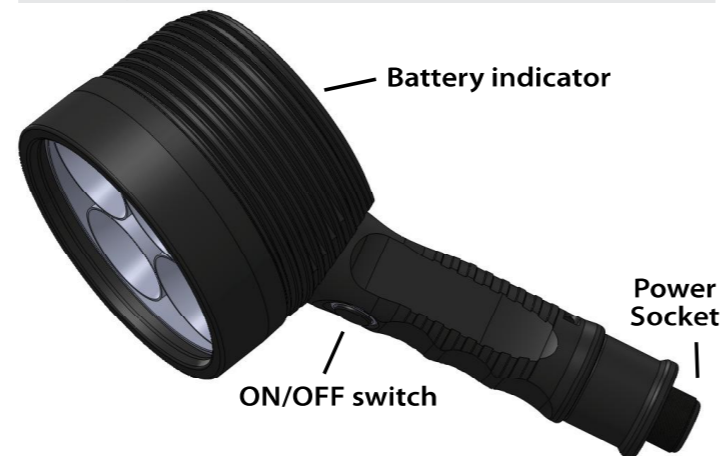
SPORTAC *SP*®

High Performance Sports Lighting
<http://www.sportaclight.com>

Sportac ZP10L9 features a natural handgun grip and packs maximum lumen in a compact and light body. ZP10L9 offers intuitive user interface and tough build quality like no other. Be crazy lumen output with you in the dark.

Quick Specifications

Voltage	10V - 24V
Output	5 brightness level + SOS
Battery	9*18650 11.1V Li-ion Battery Pack



** Custom made models such as neutral white or specialty LED are not listed here. Check our website for detail.

WARNING - This light can run extremely hot at higher output, do not leave it running unattended.

WARNING - Lithium and Li-ion batteries can explode or cause burns if disassembled, shorted, reversed polarity or exposed to high temperature.

Battery Safety Precaution

Only charge the 11.1V Li-ion battery pack with the SPORTAC 11.1V CC/CV Li-ion charger. Charging with non-compatible charger or battery pack may lead to battery damage, leak or explosion. Our 11.1V Li-ion charger has a ten hours safety timer and will suspend charging if the timer is up. Reconnect power supply to restart charging if necessary (a full charge usually takes 6-8 hours).

When battery indicator reports low voltage (i.e. flashing red), lower the LED output to extend battery runtime and recharge battery pack soon. Always disconnect the battery pack if you are not going to use the flashlight for a long period of time.

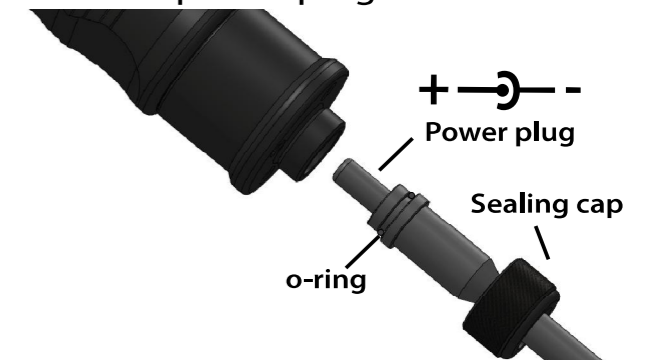
DC Power Supply Precaution

The circuitry ideally works between 10V to 24V. The light is fully tested on both 12V and 24V lead-acid battery. Where applicable, use lower input voltage (12-15V) to enhance circuit efficiency and operates at lower temperature. At very low input voltage (usually less than 10V), user may experience some current noise generated from the circuit. This is normal. When using extending cable, always consider using thicker copper wire to reduce voltage drop across the wire.

NEVER reverse the battery polarity
NEVER short input power connection

Quick Start Guide

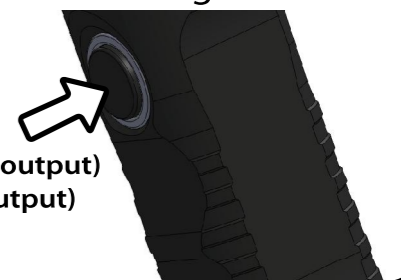
Connect the 12V (24V) DC power plug or 11.1V Li-ion battery pack to the flashlight. Replace the cable sealing cap to secure the power plug.



Battery indicator (blue) will flash once when the power is connected.

Basic ON and OFF

Turn on the light at maximum output by pressing and holding the on/off switch button. You can also turn on the light at its lowest output by pressing and release the switch button within 0.3 second. To turn off the light, press and release the switch button again.



Adjusting output level

With light on, press and hold the on/off switch for longer than 0.6 second to switch to next output. Press and hold the switch will cycle between all levels.



Level	Output
1st	100%
2nd	58%
3rd	27%
4th	8%
5th	0.3%

Energy saving feature

This feature reduces output by 10% after 200 seconds at turbo mode.

Hidden S.O.S. setting

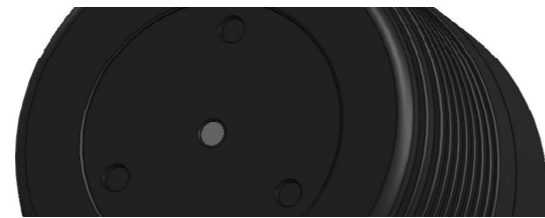
Turn on the flashlight, and then press and hold the on/off switch for more than 10 seconds to enter S.O.S. setting. Turn off the light to exit.

TVS diode protection

TVS diode protects the circuitry from voltage spikes when connected to external battery source.

Battery level indicator

The indicator LED reports the present voltage by flashing different LED color.



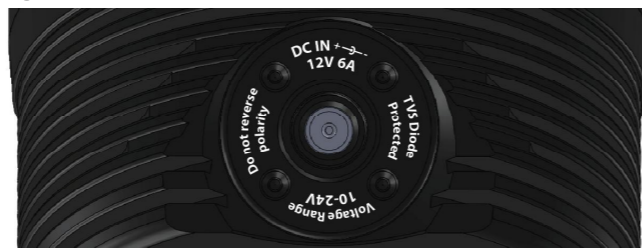
LED Color	Voltage
Blue	higher than 10.8V
Red	9.8V-10.8V
Red (Flash)	lower than 9.8V

High Voltage Mode

For optimal circuitry temperature operating at higher voltage, when initial startup voltage exceeds 18V, the maximum output will be reduced by 25%, and energy saving percentage will be changed to 25%.

12V Car charger

When using 12V car charger to power the light, ensure the car charger fuse in the car can withstand 10A of current or higher. Replace the car fuse if necessary.



Charging 11.1V li-ion battery pack

Connect the battery to the charger's battery end, and connect the 15V 1.6A power supply to the charger (DC IN) to charge. RED indicator means the battery is being charged.



How to prolong battery life

- 1) Recharge often. No need to discharge the battery completely before charging as li-ion has no memory effect.
- 2) For long-term storage, drain the battery to 50% or below. Disconnect the battery pack from the flashlight.

Maintenance

Periodically clean the o-rings with a lint free cloth and apply a thin coating of EAGTAC synthetic PTFE lubricant to the o-rings.

Do not touch or attempt to clean the reflector. It will permanently damage the reflective coating.

Troubleshooting - Flashlight does not turn on or fails to switch between outputs normally:

- 1) Use at least 10A fuse for car charger
- 2) Ensure power plug is connected properly
- 3) Ensure battery pack is charged
- 4) Check battery polarity

"No Hassle" SPORTAC Warranty

For repair, replacement, or other inquiries contact your SPORTAC dealer. You can also reach our customer support via email at support@sportaclight.com.

We warrant our flashlights to be free from defects in workmanship and materials. We will repair, replace at our option, without charging any product or part which is found to be defective under normal use within 120 months from the date of purchase with the proof of purchase.

Electronics, chargers and rechargeable batteries are covered for a period of 12 months with purchase receipt. Such repair or replacement shall be the purchaser's sole and exclusive remedy under this warranty. Normal wear and tear including batteries draining is not covered, nor is damage resulting from modification, misuse, abuse, neglect, faulty battery, battery leakage, reversed charging damage, improper maintenance or repaired by anyone other than SPORTAC or authorized dealer.